

# Owner's Manual

## TABLE OF CONTENTS

	PAGE
SAFETY PRECAUTIONS .....	2
GENERAL .....	2
INDOOR UNIT PART NAMES .....	3
WIRED REMOTE CONTROL .....	3
OPERATION INSTRUCTIONS .....	6
WIRELESS REMOTE CONTROL .....	10
REMOTE CONTROL FUNCTIONS .....	11
CLEANING, MAINTENANCE AND TROUBLESHOOTING .....	13

### NOTE TO EQUIPMENT OWNER:

Please read this Owner's Information Manual carefully before installing and using this appliance and keep this manual for future reference.

For your convenience, please record the model and serial numbers of your new equipment in the spaces provided. This information, along with the installation data and dealer contact information, will be helpful should your system require maintenance or service.

#### UNIT INFORMATION

Model # \_\_\_\_\_

Serial # \_\_\_\_\_

#### INSTALLATION INFORMATION

Date Installed \_\_\_\_\_

#### DEALERSHIP CONTACT INFORMATION

Company Name: \_\_\_\_\_

Address: \_\_\_\_\_

Phone Number: \_\_\_\_\_

Technician Name: \_\_\_\_\_


## SAFETY PRECAUTIONS

### **WARNING**

#### **PERSONAL INJURY, DEATH, OR PROPERTY DAMAGE HAZARD**

Failure to follow this warning could result in personal injury, death, or property damage.

Read and follow all instructions and warnings, including labels shipped with or attached to unit before operating your new air conditioner.

Any time you see this symbol  in manuals, instructions and on the unit, be aware of the potential for personal injury. There are three levels of precaution:

**DANGER** identifies the most serious hazards which will result in severe personal injury or death.

**WARNING** signifies hazards that could result in personal injury or death.

**CAUTION** is used to identify unsafe practices which would result in minor personal injury or product and property damage.

**NOTE** is used to highlight suggestions which **will** result in enhanced installation, reliability, or operation.

### **WARNING**

#### **PERSONAL INJURY, DEATH AND / OR PROPERTY DAMAGE HAZARD**

Failure to follow this warning could result in personal injury, death or property damage.

Improper installation, adjustment, alteration, service, maintenance, or use can cause explosion, fire, electrical shock, or other conditions which may cause personal injury or property damage.

Consult a qualified installer, service agency, your distributor or branch for information or assistance. The qualified installer or service agency must use factory-authorized kits or accessories when modifying this product.

## GENERAL

The ducted fan coil unit provides quiet, maximum comfort. In addition to cooling and/or heating, the ducted fan coil unit matched with an outdoor condensing unit will filter and dehumidify the air in the room to provide maximum comfort.

**IMPORTANT:** The ducted fan coil unit should be installed by authorized personnel only; using approved tubing and accessories. If technical assistance, service or repair is needed, contact the installer.

The ducted fan coil unit can be set up and operated from the remote control (provided).

### **Operating Modes:**

The ducted fan coil unit has five operating modes.

- Fan only
- Auto
- Heating
- Cooling
- Dehumidification (DRY)

#### **Fan Only**

In the Fan Only mode, the system filters and circulates room air without changing room air temperature.

#### **Auto**

In the Auto mode, the system automatically cools or heats the room according to the user-selected set point.

#### **Heating**

In the Heating mode, the system heats and filters room air.

#### **Cooling**

In Cooling mode, the system cools, dries and filters room air.

#### **Dehumidification (DRY)**

In Dehumidification mode, the system dries, filters and slightly cools room air temperature. Use of this mode **does not** take the place of a dehumidifier.

### **Wireless Remote Control**

The wireless remote control transmits, via the infrared receiver on the wired remote controller, commands to set up and operate the system. The control has a window display panel that shows the current system status. The control can be secured to a surface when used with the mounting bracket provided.

### **Wired Remote Control**

The Wired Remote control is necessary to operate the system.

## INDOOR UNIT PART NAMES

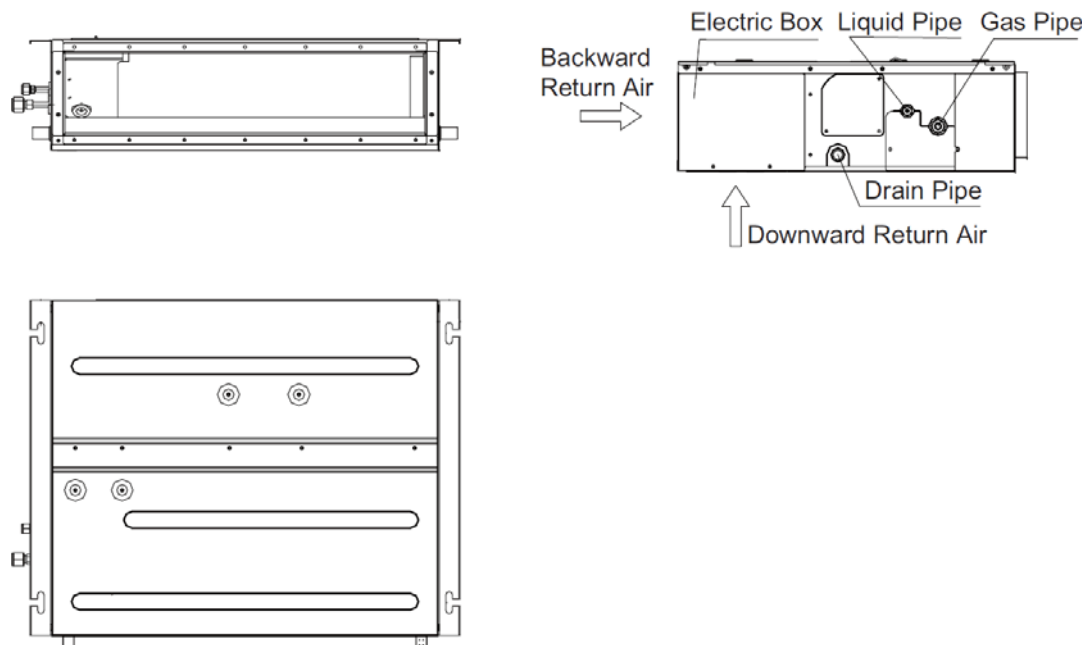


Fig. 1 – Indoor Unit

## WIRED REMOTE CONTROL

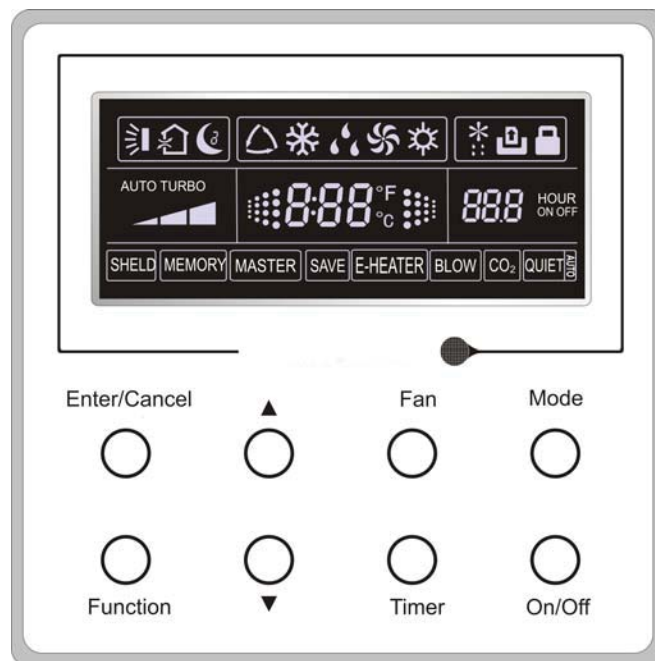


Fig. 2 – Wired Controller

## LCD Wired Controller Display

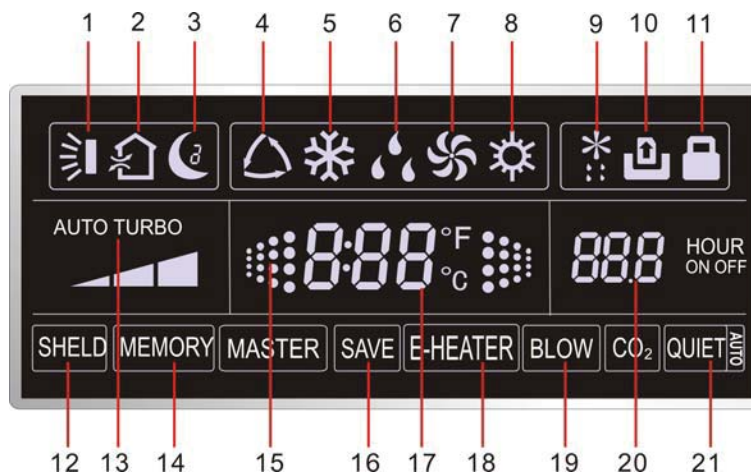
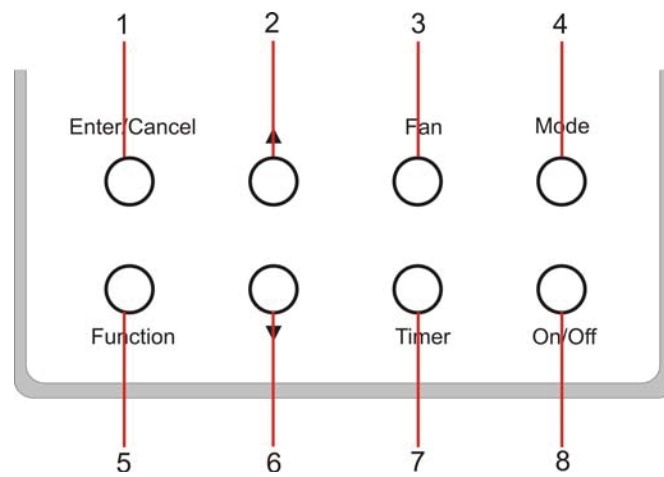


Fig. 3 – LCD Display

Table 1—LCD Display

1		Swing function (Not available on this model)
2		Air exchange function (Not available on this model).
3		Sleep function (Only sleep 1).
4		Each kind of running mode of indoor unit (Cooling/Heating/Fan/Dry/Auto mode)
5		Cooling mode
6		Dry mode
7		Fan mode
8		Heating mode
9		Defrosting function for the outdoor unit.
10		Gate-control function (Not available on this model)
11		Lock function.
12	SHIELD	Shield functions (Button operation, temperature setting, On/Off operation, Mode setting are disabled by the remote monitoring system.)
13	Turbo	Turbo function activated
14	MEMORY	Memory function (The indoor unit resumes the original setting state after power failure and then power recovery).
15		It blinks under on state of the unit without operation of any button.
16	SAVE	Energy-saving function (Not available on this model)
17		Ambient/setting temperature value
18	E-HEATER	Electric auxiliary heating function. (Not available on this model)
19	BLOW	Blow function.
20		Timing value.
21	QUIET	Quiet function (two types: quiet and auto quiet). (Not available on this model)



**Fig. 4 – Button Layout**

**Table 2—Button Functions**

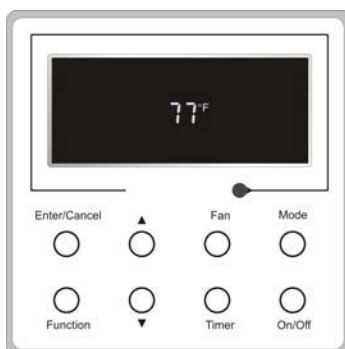
No.	Name	Function
1	Enter/Cancel	Function selection and cancellation.
2	▲	① Running temperature setting of the indoor unit, range: 60.8°F~86°F(16°C~30°C) ② Timer setting, range:0.5-24 hr.
6	▼	
3	Fan	Setting of the high/middle/low/auto fan speed.
4	Mode	Setting of the Cooling/Heating/Fan/Dry/Auto mode of the indoor unit.
5	Function	Switchover among the functions of Turbo/Save/E-heater/Blow etc..
7	Timer	Timer setting.
8	On/Off	Turn on/off the indoor unit.
4+2	▲+Mode	Press them for 5s under off state of the unit to Enter/Cancel the Memory function(If memory is set, indoor unit after power failure and then power recovery will resume the original setting state. If not, the indoor unit is defaulted to be off after power recovery. Memory off is default before delivery.).
3+6	Fan+▼	By pressing them at the same time under off state of the unit, ❄ will be displayed on the wired remote controller for the cooling only unit, while ❄ will be displayed on the wired remote controller for the cooling and heating unit.
2+6	▲+▼	Upon startup of the unit without malfunction or under off state of the unit,press them at the same time for 5s to enter the lock state, in which case, any other buttons won't respond the press. Repress them for 5s to quit this state.
4+6	Mode+▼	Under OFF state, the Celsius and Fahrenheit scales can be switched by pressing "Mode" and "▼" for five seconds.
5+7	Function+Timer	Under OFF state, it is available to go to the commissioning status by pressing "Function" and "Timer" for five seconds, and let "00" displayed on the temperature display area by pressing "Mode", then adjust the options which is shown on the timer area by pressing "▲" and "▼". There are totally four options, as follows: ① Indoor ambient temperature is sensed by the return air temperature sensor ( 01 displayed on the timer area). ② Indoor ambient temperature is sensed by the wired controller (02 displayed on the timer area). ③ The return air temperature sensor is selected under the cooling, dry, or fan mode; while the wired controller temperature sensor is selected under the heating or auto mode. (03 is displayed on the timer area). ④ The wired controller temperature sensor is selected under the cooling, dry, or fan mode; while the return air temperature sensor is selected under the heating mode. (04 is displayed on the timer display area).
5+7	Function+Timer	Under OFF state, it is available to go to the commissioning status by pressing "Function" and "Timer" for five seconds. Press "Mode" button to until "01" icon is shown at the temperature display area. The setting status will be shown at timer area. Press "▲" and "▼" button to adjust and two options are available: ① Three low levels (01) ; ② Three high levels (02).

# OPERATION INSTRUCTIONS

## On/Off

Press On/Off to turn on the unit and turn it off by another press.

**NOTE:** The state shown in Fig. 5 indicates the “Off” state of the unit after power on. The state shown in Fig. 6 indicates the “On” state of the unit after power on.



**Fig. 5 – Off State**



**Fig. 6 – On State**

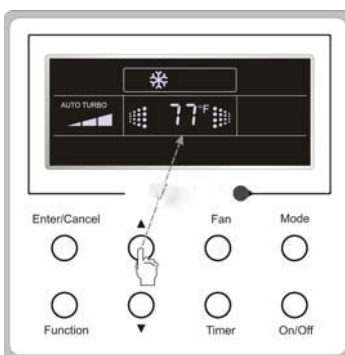
## Mode Setting

Under the ON state, press the Mode to switch the operation modes as the following sequence: **Auto–Cooling–Dry–Fan–Heating**

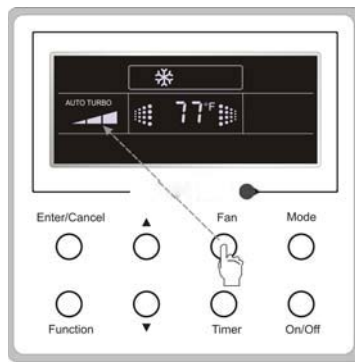
## Temperature Setting

Press the ▲ or ▼ to increase/decrease the preset temperature. If pressing either of the, continuously, the temperature increases or decreases by 1.8°F (1°C) every 0.5s, as shown in Fig. 7.

In the Cooling, Dry, Fan or Heating mode, the temperature setting range is 60.8°F–86°F (16°C–30°C). In the Auto mode, the setting temperature is unadjustable.



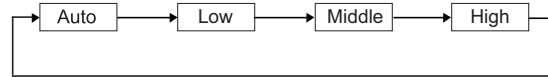
**Fig. 7 – LCD Display**



**Fig. 8 – LCD Display**

### **Fan Setting**

Under the “On” state of the unit, press Fan and the indoor unit’s fan speed changes circularly as shown in Fig. 9.



**Fig. 9 – Fan Setting**

### **Timer Setting**

When the unit is on, press the Timer button to set the timer to OFF. When the unit is off, press the Timer button to set the timer to ON.

#### **Timer on setting:**

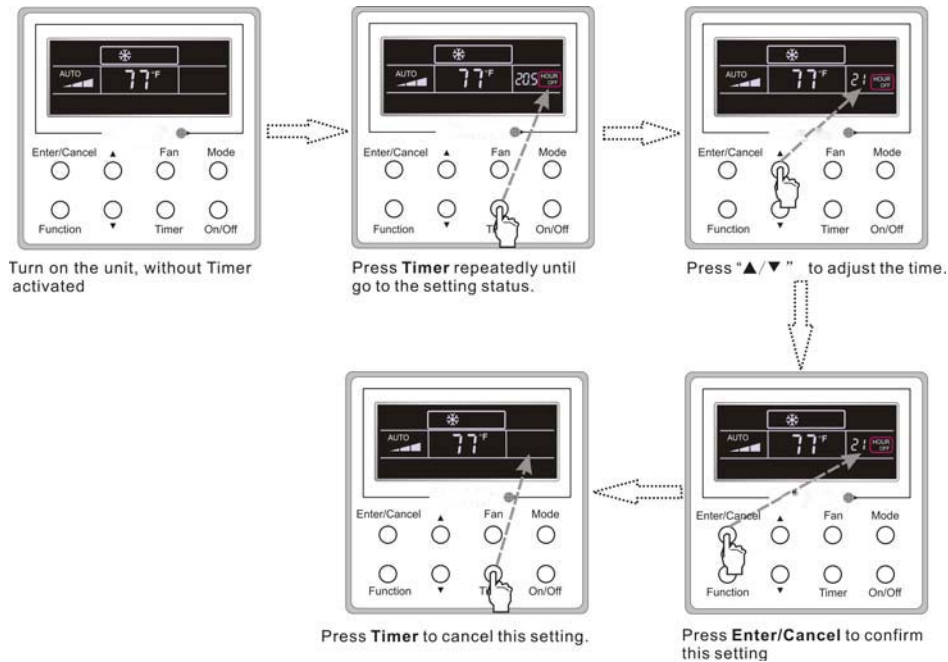
When the unit is OFF without a timer setting and the Timer button is pressed, the LCD displays XX HOUR ON blinking. In this case, press the ▲ or ▼ button to adjust the time and then press Enter/Cancel to confirm.

#### **Timer off setting:**

When the unit is ON without a timer setting, and the Timer button is pressed, the LCD displays XX HOUR OFF blinking. In this case, press the ▲ or ▼ button to adjust the time and then press Enter/Cancel to confirm.

#### **Cancel timer:**

After setting the timer, if the Timer button is pressed, the LCD will not display **xx. Hour** so that timer setting is canceled. The Timer off setting under the “On” state of the unit is shown as Fig 10.



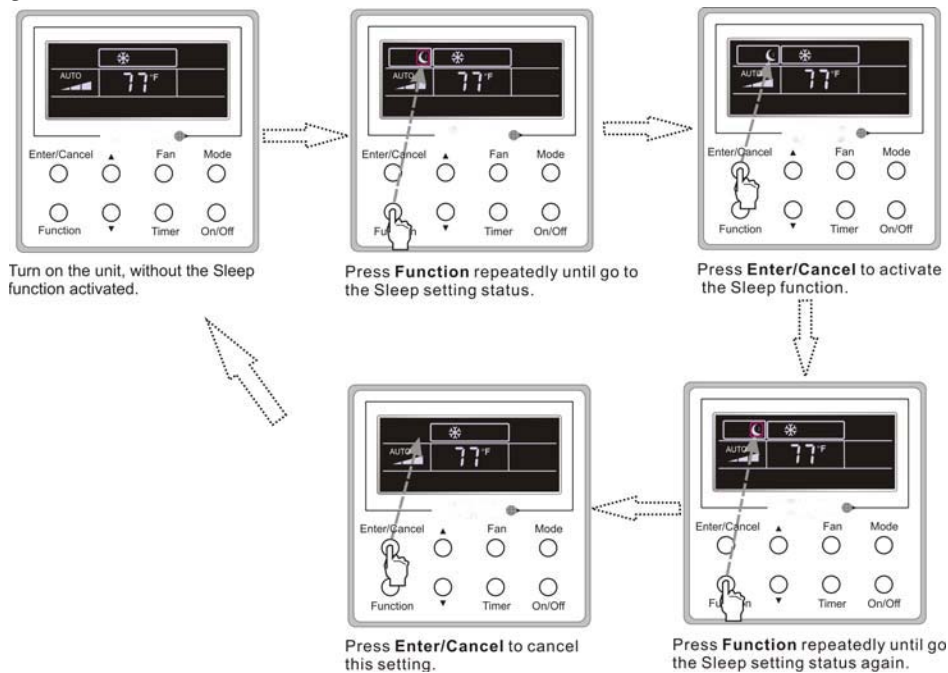
**Fig. 10 – Timer off Setting under the “On” State of the Unit**

**Timer range:** 0.5–24hr. Every press of ▲ or ▼ increases or decreases the set time by 0.5hr. If either button is pressed continuously, the set time increases or decreases by 0.5hr every 0.5s.

### Sleep Setting

**Sleep on:** While the unit is on, press Function until the unit enters the Sleep setting. Next, press Enter/Cancel to confirm this setting.

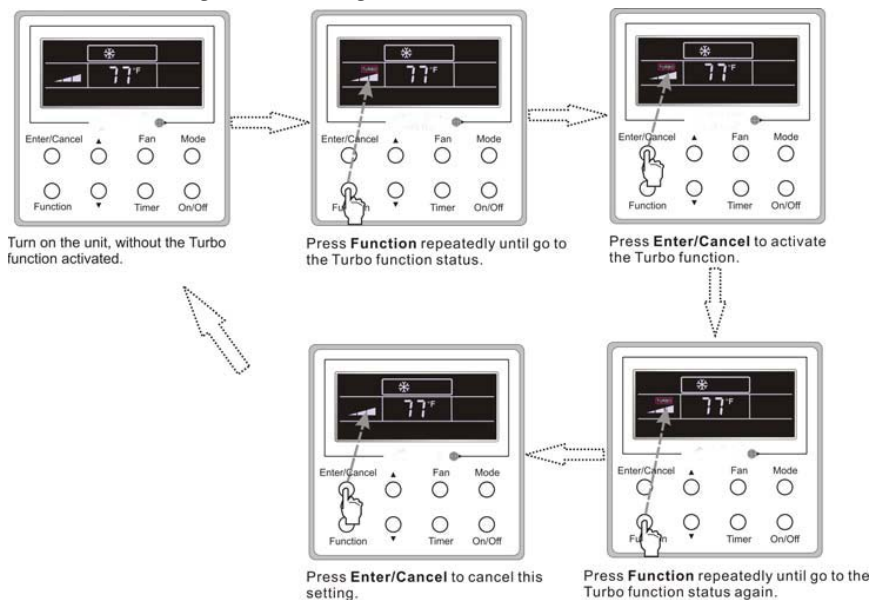
**Sleep off:** When the Sleep function is activated, press Function to enter the Sleep setting status. After that, press Enter/Cancel to cancel this function. In the Cooling or Dry mode, the temperature increases by 1.8°F (1°C) after the unit runs under Sleep 1 for 1 hour and 1.8°F (1°C) after another 1 hour period. After that, the unit runs at this temperature. In the Heating mode, the temperature decreases by 1.8°F (1°C) after the unit runs under Sleep 1 for 1 hour and 1.8°F (1°C) after another 1 hour period. After that, the unit runs at this temperature. The Sleep setting is shown in Fig. 11.



**Fig. 11 – Sleep Setting**

### Turbo Setting

**Turbo function:** The unit at the high fan speed can provide quick cooling or heating so that the room temperature can quickly approach the setting value. In the Cooling or Heating mode, press Function until the unit enters the Turbo setting status and then press Enter/Cancel to confirm the setting. When the Turbo function is activated, press Function to enter the Turbo setting status and then press Enter/Cancel to cancel this function. The Turbo function setting is shown in Fig. 12.



**Fig. 12 – Turbo Setting**



### Blow Setting

**Blow function:** After the unit is turned off, the water in the indoor unit evaporator will be automatically evaporated to avoid mildew. In the Cooling or Dry mode, press the Function button until the unit enters the Blow setting status and then press Enter/Cancel to activate this function. When the Blow function is activated, press Function to the Blow setting status and then press Enter/Cancel to cancel this function. The Blow function setting is shown in the following figure.

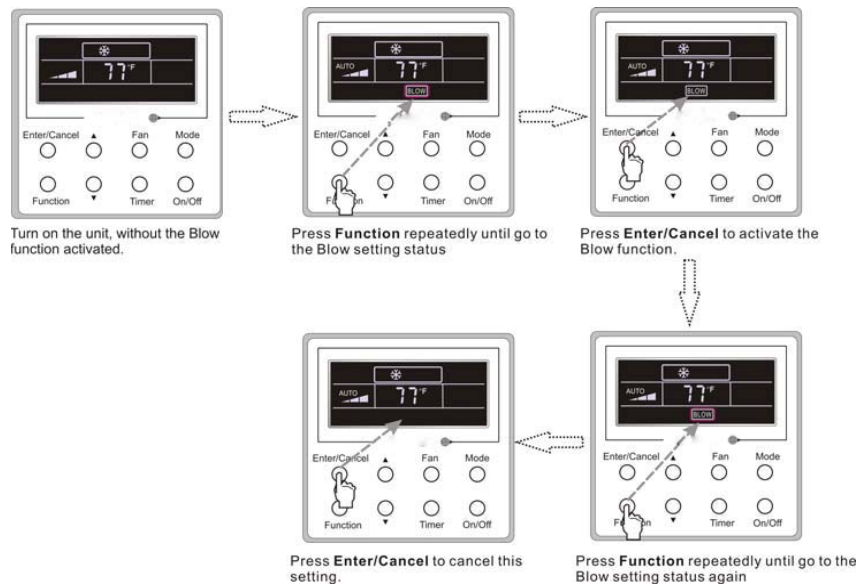


Fig. 13 – Blow Setting

**NOTE:** When the Blow function is activated, if the user turns off the unit by pressing On/Off or by the remote controller, the indoor fan runs at the low fan speed for 2 min, and “BLOW” appears on the LCD. If the Blow function is deactivated, the indoor fan turns off directly. The Blow function is unavailable in the Fan or Heating mode.

### Other Functions

- A. **Lock** – Upon start up of the unit without malfunction or under the unit’s “Off” state, press ▲ and ▼ at the same time for 5s until the wired controller enters the Lock function. In this case, the LCD displays . After that, press these two buttons again at the same time for 5s to quit this function. Under the Lock state, any other button press will not receive a response.
- B. **Memory – Memory switchover:** Under the unit’s “Off” state, press Mode and ▲ at the same time for 5s to switch memory states between memory on and memory off. When this function is activated, the Memory appears. If this function is not set, the unit will be in the “Off” state after power failure and then power recovery.  
**Memory recovery:** If this function has been set for the wired controller, the wired controller after power failure resumes its original running state upon power recovery. **Memory contents:** On/ Off, Mode, set temperature, set fan speed and Lock function.
- C. **Selection of the Temperature Sensor** – Under the unit’s OFF state, press both “Function” and “Timer” for five seconds to enter the commissioning status. Under this status, adjust the display in the temperature display area to “00” through the button “Mode”, and then adjust the temperature sensor option in the timer display area through the button ▲ or ▼.
  - 1. Indoor ambient temperature is sensed at the return air inlet (**01** in the timer display area).
  - 2. Indoor ambient temperature is the sensed at the wired controller (**02** in the timer display area).
  - 3. Select the temperature sensor at the return air inlet under the cooling, dry and fan modes, while selecting the temperature sensor at the wired controller under the heating and auto modes (**03** in the timer display area).
  - 4. Select the temperature sensor at the wired controller under the cooling, dry and fan modes, and select the temperature sensor at the return air inlet under the heating mode and auto modes (**04** displayed in the timer display area).

The factory defaulted setting is **3**.

After the setting, press “Enter/Cancel” to confirm and quit this setting status. Pressing “On/Off” can also quit the commissioning status however the set data will not be memorized.

Under the commissioning status, if there is no other operation in 20 seconds after the last button press, it reverts back to the previous state without memorizing the current data.

- D. **Selection of the Fan Speed** – Under the unit’s OFF state, press both the buttons “Function” and “Timer” for five seconds to enter the commissioning status, and then adjust the display in the temperature display area to 01 using the “Mode” button and adjust the fan speed setting, which comes to two options.

**01:** Three low fan speeds; **02:** Three high fan speeds

After the setting, press “Enter/Cancel” to confirm and quit this setting status. Pressing “On/Off” can also quit the commissioning status however the set data will not be memorized. Under the commissioning status, if there is no any operation in 20 seconds after the last button press, it reverts back to the previous state without memorizing the current data.

## WIRELESS REMOTE CONTROL



- 1 **ON/OFF**  
Press to start or stop operation
- 2 **-** : Press to decrease temperature setting.
- 3 **+** : Press to increase temperature setting.
- 4 **MODE**  
Press to select the operation mode (AUTO/COOL/DRY/FAN/HEAT)
- 5 **FAN**  
Press to set the fan speed
- 6 **SWING**  
(Function Not Available)
- 7 **FOLLOW ME**
- 8 **🌳/🏠 Health or Air** (Function Not Available)
- 9 **SLEEP**
- 10 **TEMP** (Function Not Available)
- 11 **QUIET**  
Press to set the QUIET function
- 12 **CLOCK**  
Press it set clock
- 13 **T-ON | T-OFF**  
Press it to set auto-off /auto-on timer.
- 14 **TURBO**
- 15 **LIGHT** (Function Not Available)
- 16 **X-FAN**

Fig. 14 – Remote Control

## ⚠ CAUTION

### EQUIPMENT DAMAGE HAZARD

Failure to follow this caution may result in equipment damage. Handle the control with care and avoid getting the control wet.

**NOTE:** To switch between °C and °F, push the “MODE” and “-” button simultaneously while the remote controller is off.

**IMPORTANT:** The remote control can operate the unit from a distance of up to 25 ft. (7.6 m) as long as there are no obstructions. This is one way communication only (from remote control to wired remote controller).

The remote control can perform the following basic functions:

- Turn the system ON and OFF
- Select operating mode
- Adjust room air temperature set point and fan speed
- Adjust airflow direction

### Battery Installation

Two AAA 1.5 v alkaline batteries (included) are required for operation of the remote control.

To install or replace batteries:

1. Slide the back cover off the control to open the battery compartment.
2. Remove old batteries if you are replacing the batteries.
3. Insert batteries. Follow the polarity markings inside the battery compartment.
4. Replace battery compartment cover.

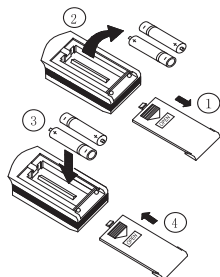


Fig. 15 – Battery Installation

### NOTE:

1. When replacing batteries, do not use old batteries or a different type battery. This may cause the remote control to malfunction.
2. If the remote is not going to be used for several weeks, remove the batteries. Otherwise battery leakage may damage the remote control.
3. The average battery life under normal use is about 6 months.
4. Replace the batteries when there is no audible beep from the indoor unit or if the Transmission Indicator fails to light.

## Remote Control Operation – Quick Start

**NOTE:** When transmitting a command from the remote control to the unit, be sure to point the control toward the wired remote controller. The wired remote controller confirms receipt of a command by sounding an audible beep.

1. Turn the unit on by pushing the **ON/OFF** button.
2. Select the desired mode by pushing the mode button.



Fig. 16 – Modes


3. Select the temperature set point by pointing the control toward the unit and pressing the “+” or “-” temperature set point buttons until the desired temperature appears on screen.
4. Select the desired fan speed by pressing the **FAN** button to select desired fan speed.

**NOTE:** If unit is operating in Dry mode, low fan speed appears and the fan speed cannot be changed.

## REMOTE CONTROL FUNCTIONS

The remote control is the interface between the user and the ducted systems. Commands are entered by the user to control the system. Any command that has been entered with the remote control remains in memory until it is changed by the user or the batteries are replaced.

**NOTE:** When entering commands, point the remote control in the direction of the LED display on the wired remote controller.

The  appears for a short period of time on the remote control when the command is entered. The unit only emits an audible beep when the signals are received correctly.

### ON/OFF:

Press this button to turn unit on and off.

### MODE:

Each time this button is pressed, a mode is selected in a sequence that goes from AUTO, COOL, DRY, FAN and HEAT, as shown below:

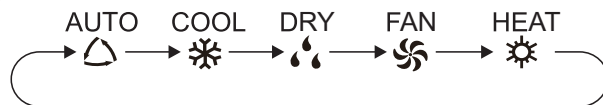


Fig. 17 – Modes

The AUTO mode is the default setting at start-up. In AUTO mode, the set temperature will not appear on the LCD, and the unit automatically selects the suitable operation mode to provide comfort based on parameters set from the factory.

### ⏮:

Press once to decrease the setpoint by 1°F. If the button is pressed for more than two seconds, the setpoint decreases rapidly in increments of 1°F. In AUTO mode, set temperature is not adjustable.

### ⏭:

Press to increase the setpoint by 1°F. If the button is pressed for more than two seconds, the setpoint increases rapidly in increments of 1°F. In AUTO mode, set temperature is not adjustable.

### COOL:

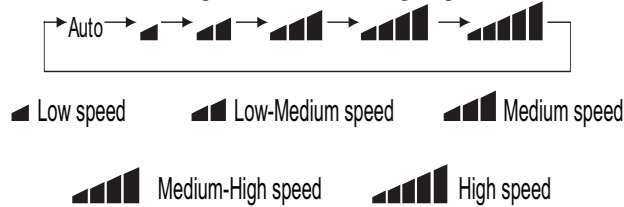
Press to cool to the selected set point and remove moisture. The system varies compressor speed to maintain desired temperature.

### HEAT:

Press to heat to the selected room set point. The system varies compressor speed to maintain desired room temperature.

### **FAN:**

Press to set the fan speed in the following sequence.



**Fig. 18 – Fan speed**

### **FOLLOW ME:**

Press to select the FOLLOW ME function, and the icon appears. The unit senses room temperature at the remote controller instead of at the indoor unit. The function then adjusts airflow and temperature accordingly for the ultimate in personal comfort control and energy savings.

Press again to exit this function. For best performance, keep the remote controller away from heat or cold temperature sources while using this function.



Press to set On/Off, the healthy and scavenging functions in the operation status.

**NOTE: Function not available on this model.**

### **SLEEP MODE:**

The unit automatically adjusts room temperature during your sleep time. This slight change in temperature will not affect your comfort level due to the natural effects that sleeping has on the body, however it reduces energy consumption and lowers your electric bill.

The unit has three Sleep Modes to select from. Press the SLEEP button to select Sleep 1, Sleep 2, Sleep 3 or Cancel. The SLEEP icon appears.

#### **SLEEP 1**

In Cool, Dehumidify modes: sleep status after run for one hour, the main unit setting temperature increases 1.8°F (1°C), setting temperature increased 3.6 °F (2°C), the unit runs at this setting temperature. In Heat mode: sleep status after running for one hour, the setting temperature decreases 1.8 °F (1°C), 2 hours, the setting temperature decreases 3.6°F (2°C), then the unit runs at this setting temperature.

### **CLOCK SETTING**

Press to set clock time. The Clock icon, on the remote controller, blinks. Within 5 seconds, press “+” or “-” button to set the clock time. With each press of the “+” or “-” buttons, the clock time increases or decreases by 1 minute. To quickly adjust the time setting, press and hold “+” or “-” button for 2 seconds.

Release the button when you have reached the desired time setting. Press the “CLOCK” button to confirm the time, and clock icon stops blinking.

**NOTE:** Clock time adopts 24-hour mode. A 12-hour format is not available.

### **T-ON button (Timer ON)**

To set when you want the unit to turn On at the end of a selected time period, use the button labeled “T-ON” on the remote controller. Press this button to disable the clock icon and replace it with the word “ON” (blinking). Press the “+” or “-” buttons to adjust timer setting 1 minute at a time. Press and hold “+” or “-” button to set timer more quickly. Press “T-ON” button again to confirm setting, and the word “ON” stops blinking. To cancel, press “T-ON” button again.

### **T-OFF button (Timer OFF)**

**NOTE:** Under Timer On and Off status, you can set T-ON and T-OFF simultaneously. Before setting timer, be sure to set clock to correct time.

### **TEMP:**

Press to see the indoor set temperature or indoor ambient temperature on the indoor unit’s display.

**NOTE: Function not available on this model.**

### **TURBO:**

The desired room set point can be achieved faster in TURBO mode. After selecting the “HEAT” or “COOL” mode button, push the “TURBO” button. The TURBO icon appears on the remote controller and the unit runs at an ultra-high speed. To deactivate the feature, push the “TURBO” button again. The unit returns to normal operation.

### **LIGHT:**

This function allows the user to turn the display ON or OFF.


**NOTE: Function not available on this model.**


### **X-FAN:**

Press the X-FAN button in COOL or DRY mode to activate the DRY function and the X-FAN icon appears. When this function is activated, the indoor fan continues to run for 10 minutes to dry the indoor coil after the unit is turned off. X-FAN is not available in AUTO, FAN and HEAT mode.

## **Combination Buttons**

### **Combination of “+” and “-” Buttons:**

Press “+” and “-” buttons simultaneously for 8 seconds to lock or unlock the keypad. If the remote control is locked,  is displayed.

In this case, pressing any button,  blinks three times to acknowledge the keypad is locked. Repeat the process to unlock the remote controller.

### **Combination of “MODE” and “-” Buttons:**

Switch between Fahrenheit and Centigrade. At unit OFF, press the “MODE” and “-” buttons simultaneously to switch between °C and °F.

## **Combination of “TEMP” and “CLOCK ”Buttons:**

### **Energy Savings Function**

1. Press “TEMP” and “CLOCK” simultaneously in COOL mode to start the Energy Savings Function. The remote controller displays “SE”.
2. Repeat the operation to quit the function.

### **46°F Heating Function**

1. Press “TEMP” and “CLOCK” simultaneously in HEAT mode to start the “46°F” (8°C) Heating Function. The remote controller displays “\$” and a selected temperature of “46°F” (8°C). Repeat the operation to quit the function.

## **Wired Remote Controller**

Please refer to the Owner’s Manual of the Wired Remote Controller (KSACN0301AAA) for operation instructions.

## CLEANING, MAINTENANCE AND TROUBLESHOOTING



### CAUTION

#### ELECTRICAL SHOCK HAZARD

Failure to follow this caution may result in personal injury or death.

Always turn off power to the system before performing any cleaning or maintenance to the system. Turn off the outdoor disconnect switch located near outdoor unit. Be sure to disconnect indoor unit if on a separate switch.



### CAUTION

#### EQUIPMENT DAMAGE/OPERATION HAZARD

Failure to follow this caution may result in equipment damage or improper unit operation.

Operating the system with dirty air filters may damage the indoor unit and could cause reduced cooling performance, intermittent system operation, frost build-up on indoor coil or blown fuses.

#### Periodic Maintenance

Periodic maintenance is recommended to ensure proper operation of the unit. Recommended maintenance intervals may vary depending on the installation environment, e.g., dusty zones, etc. Refer to Table 3.



### CAUTION

#### CUT HAZARD

Failure to follow this caution may result in personal injury.

The coil fins are very sharp. Use caution when cleaning.

Always wear safety protection.

#### Cleaning the Coil

Clean the coil at the beginning of each cooling season, or when necessary. Use a vacuum cleaner or a long-bristle brush to avoid damage to the coil fins.

#### Air Filters

Remove and clean the air filters once a month.

**NOTE:** If air filters show signs of excessive wear or are torn, they must be replaced. Contact your local dealer for replacement filters.



### CAUTION

#### EQUIPMENT DAMAGE HAZARD

Failure to follow this caution may result in equipment damage.

When cleaning the front panel, do not use water hotter than 105°F (40.56°C) and do not pour water onto the fan coil.

Do not use abrasive or petroleum based cleaners as they may damage the front panel.

#### Preparing for Extended Shutdown Period

Clean the filters and reposition them in the unit. Operate the unit in Fan only mode for 12 hours to dry all internal parts.

Turn main power supply off and remove batteries from the remote control.

#### System Operation Recommendations

The items outlined in the following list helps to assure proper system operation:

- Replace both remote control batteries at the same time.
- Point the remote control toward the unit display panel when transmitting a command.
- Keep doors and windows closed while unit is operating.
- Contact an authorized service representative if a problem arises that cannot be easily resolved.
- Do not perform cleaning or maintenance activities while unit is on.
- Keep display panel on unit away from direct sunlight and heat as this may interfere with remote control transmissions.
- Do not block air intakes and outlets on the indoor or outdoor units.

#### Energy Saving Recommendations

The following recommendations add greater efficiency to the ductfree system:

- Select a comfortable thermostat setting and leave it at chosen setting. Avoid continually raising and lowering the setting.
- Keep unit filter clean. Frequent cleaning may be necessary depending on indoor air quality.
- Use drapes, curtains or shades to keep direct sunlight from heating room on very hot days.
- Do not obstruct air intake on front panel.
- Turn on air conditioning before indoor air becomes too uncomfortable.

## Troubleshooting

Refer to Table 4 before contacting your local dealer.

**Table 3—Periodic Maintenance**

INDOOR UNIT	EVERY 3 MONTHS	EVERY 6 MONTHS	EVERY YEAR
Clean Air Filter*	•	•	•
Change Wireless Remote Control Batteries		•	
OUTDOOR UNIT	EVERY 3 MONTHS	EVERY 6 MONTHS	EVERY YEAR
Clean Outdoor Coil from Outside		•	•
Clean Outdoor Coil from Inside†			•
Blow Air Over Electric Parts†			•
Check Electric Connection Tightening†			•
Clean Fan Wheel†			•
Check Fan Tightening†			•
Clean Drain Pans†			•

\* Increase frequency in dusty zones.

† Maintenance to be carried out by qualified service personnel. Refer to the Installation Manual

**Table 4—Troubleshooting**

PROBLEM	POSSIBLE CAUSE	SOLUTION
<b>Indoor unit emits a bad odor on start-up</b>	<ul style="list-style-type: none"> <li>Air filter dirty</li> <li>Output air still has odor after cleaning filter.</li> </ul>	<ul style="list-style-type: none"> <li>Clean the air filter</li> <li>Contact your service representative.</li> </ul>
<b>You hear water flowing noise when the unit is running</b>	<ul style="list-style-type: none"> <li>This is normal and is the refrigerant flowing through the system.</li> </ul>	<ul style="list-style-type: none"> <li>No maintenance required</li> </ul>
<b>Indoor unit produces a mist when the air conditioner is running</b>	<ul style="list-style-type: none"> <li>This is normal cooling and is caused by high humidity and temperature in the room.</li> </ul>	<ul style="list-style-type: none"> <li>No maintenance required. Mist should stop as room is cooled down and the humidity is removed.</li> </ul>
<b>Wireless remote control does not work</b>	<ul style="list-style-type: none"> <li>Batteries are dead.</li> <li>Unit needs to be reset.</li> </ul>	<ul style="list-style-type: none"> <li>See battery replacement section in this manual and replace batteries.</li> <li>Turn off power to indoor unit. Remove plug from wall and then reinsert plug. Restart unit.</li> </ul>
<b>Water leaks into room from Indoor unit</b>	<ul style="list-style-type: none"> <li>Condensing water has overflowed</li> </ul>	<ul style="list-style-type: none"> <li>Check indoor condensing drain or call your representative.</li> </ul>
<b>Unit/System Does Not Work</b>	<ul style="list-style-type: none"> <li>To protect the unit upon an immediate restart after a stop, the system controller delays the unit for 3 minutes before allowing the unit to start back up.</li> <li>The circuit breaker has tripped or a fuse has blown.</li> <li>Power failure.</li> <li>Error codes displayed</li> <li>Voltage is too low.</li> </ul>	<ul style="list-style-type: none"> <li>After turning unit off, wait at least 3 minutes before trying to restart.</li> <li>Reset the circuit breaker or replace the fuse with the specified replacement fuse.</li> <li>Restart operation when the power is restored.</li> <li>Call your service representative.</li> <li>Call your service representative.</li> </ul>
<b>Cooling is Not Working Properly</b>	<ul style="list-style-type: none"> <li>The filter is blocked with dust.</li> <li>Temperature is not set properly.</li> <li>A window or door is open.</li> <li>The outdoor unit is obstructed.</li> <li>The fan speed is too low.</li> <li>The operation mode is in Fan instead of Cool.</li> </ul>	<ul style="list-style-type: none"> <li>Clean the air filter.</li> <li>Check the temperature and reset if necessary.</li> <li>Close the window or door.</li> <li>Remove the obstruction.</li> <li>Change the fan speed selection.</li> <li>Change the operating mode to Cool or reset the unit.</li> </ul>
<b>Heating is Not Working Properly</b>	<ul style="list-style-type: none"> <li>The filter is blocked with dust.</li> <li>Temperature is set too low.</li> <li>A window or door is open.</li> <li>The outdoor unit is obstructed.</li> </ul>	<ul style="list-style-type: none"> <li>Clean the air filter.</li> <li>Check the temperature and reset if necessary.</li> <li>Close the window or door.</li> <li>Remove the obstruction.</li> </ul>
<b>Unit Stops During Operation</b>	<ul style="list-style-type: none"> <li>The Off timer is not operating correctly.</li> <li>Error codes displayed</li> </ul>	<ul style="list-style-type: none"> <li>Restart the operating mode.</li> <li>Call your service representative.</li> </ul>